

STOP COCONUT RHINOCEROS BEETLE (CRB)

These pests **will cause harm** to your crops and your environment. If you find these pests, contact your local biosecurity / quarantine

IN THE PACIFIC

Scientific name: *Oryctes rhinoceros*

What do they look like?

- Adults are around 40mm long
- Different life stages look different
- Adult CRB are large black beetles with a distinctive horn and with delicate red-orange hairs on their underside

What damage do they cause?

- Look for symptoms: zig-zag / diamond cuts in fronds
- Holes in the base of the fronds

Why are they a problem?

- Kill coconut palms – the “Palm Killer”
- Can destroy entire plantations within a year
- Reduce crop yield
- Financial losses
- Hard to control and eradicate (get rid of)

How do they get here?

- Ships and shipping containers
- Agricultural equipment
- Construction materials and forestry products
- Rotting coconut and plant material

How do we control them?

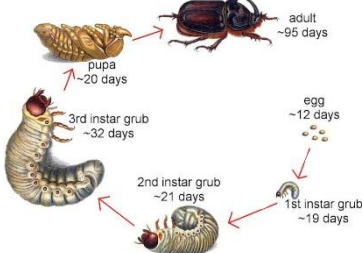
- Remove and break up fallen palm trunks and crowns to reduce breeding sites
- Place netting over composting materials to catch beetles
- Insect-killing fungi can be used to control them
- Pesticides are not recommended as they are costly and impractical

Where can we find out more?

- Contact your local agriculture department
- [College of Natural and Applied Sciences, University of Guam website](#)
- [Pacific Pests, Pathogens and Weeds](#)
- [Coconut Pests and Diseases Toolkit](#)



© Mark Schmaedick, American Samoa Community College



© Aubrey Moore, University of Guam



© Monica Cruber, Pacific Biosecurity



© Monica Cruber, Pacific Biosecurity